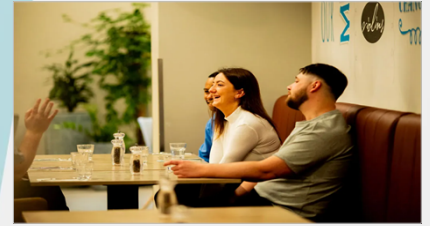


# Fast track Power BI and DAX

3 day training course



## Course contents

This course will cover the following topics. Those marked with (\*) will be covered if time allows.

### From our Introduction to Power BI course

#### Basic reports

- Getting data
- Basic visuals
- Shapes, text boxes and images

#### Data sources

- SQL Server / databases
- Excel / CSV files
- Websites

#### Working with visuals

- The formatting pane
- Conditional formatting
- Visual interactions

#### Charts

- Creating charts
- Bubble and other charts
- Grouping data
- Small multiples

#### Matrices

- Row and column headers
- Drill-down

#### Dashboard visuals

- Gauges
- Cards
- KPIs

#### Query editor

- Filtering rows
- Manipulating columns
- Working with data types
- Creating new columns

#### Creating data models

- Relationships
- Hiding fields and tables
- Renaming fields/tables

#### Filtering data

- Slicers
- Using the filter pane

#### Drill-through

- Adding drillthrough filters
- Creating back buttons
- Button drill-through

#### Azure maps

- Latitude and longitude
- Creating basic maps
- Bubble, heat and cluster maps
- Tweaking maps

#### Basic publishing

- Power BI Service
- Workspaces
- Dashboards and tiles
- Lineage view



## From our DAX for Power BI course

### Writing DAX

- Basic DAX syntax
- Referring to columns
- Commenting code
- Code layout

### Data model basics

- Importing data
- Creating a data model

### Calculated columns in DAX

- Creating calculated columns
- IF and SWITCH
- Showing RELATED data
- Dealing with blanks

### Basic measures

- Creating measures
- Understanding filter context
- Using a measures table

### The CALCULATE function

- Manipulating filter context
- Adding filters
- Removing and replacing filters

### Filters and relationships

- Cross filter direction
- Filter propagation
- The CROSSFILTER function

### Dynamic measures (\*)

- Dynamic titles
- The SELECTEDVALUE function
- Disconnected slicers

### The FILTER function (\*)

- Calculating a table
- Adding filters
- FILTER vs. CALCULATE

### Variables

- Declaring variables
- Returning a result
- Debugging with variables

### Time intelligence

- Automatic calendars
- Time intelligence functions

### Custom calendars (\*)

- Creating custom calendars
- Financial years
- Multiple relationships

## From our Advanced Power BI Reports course

## Pre-requisites for Fast track Power BI and DAX course

You'll get the most out of this course if you've already dabbled with Power BI, although no experience is essential. The course has a very ambitious timetable, and obviously our ability to cover all of the syllabus will depend on the ability of those attending!

### Prices

Venue	Address	Price per place
<a href="#">London</a>	Landmark, 99 Bishopsgate, London EC2M 3XD	£1,995 per person + VAT
<a href="#">Manchester</a>	Holiday Inn, 25 Aytoun Street, Manchester M1 3AE	£1,695 per person + VAT
<a href="#">Online</a>	Your home or office!	£1,350 per person + VAT

### Scheduled Dates

Dates	Venue	Times	Price per place	Booking
Tue/Thu 26-28 May 2026	Online	09:30-16:30	£1,350 + VAT	<a href="#">Book this</a>
Mon/Wed 15-17 June 2026	Online	09:30-16:30	£1,350 + VAT	<a href="#">Book this</a>
Wed/Fri 22-24 July 2026	Online	09:30-16:30	£1,350 + VAT	<a href="#">Book this</a>
Mon/Wed 24-26 August 2026	Online	09:30-16:30	£1,350 + VAT	<a href="#">Book this</a>
Mon/Wed 28-30 September 2026	Online	09:30-16:30	£1,350 + VAT	<a href="#">Book this</a>

If you can't see the dates that you want, ask us about organizing a customized course at your office (we'll provide and set up the computers), or else an online course tailored to your needs.