



Reporting Services

Sample manual - first two chapters



Wise Owl
Training

TABLE OF CONTENTS (1 of 8)

1	GETTING STARTED	Page
1.1	What is Reporting Services?	10
1.2	Visual Studio and SQL Server Data Tools	11
	<i>A Brief History of Version Numbers</i>	11
	<i>Installing SQL Server Data Tools</i>	11
1.3	Report Server Projects	12
	<i>Opening Visual Studio</i>	12
	<i>Creating a New Project</i>	12
	<i>Closing a Project</i>	13
	<i>Opening an Existing Project</i>	13
	<i>Using the Start Page</i>	13
1.4	The Visual Studio Screen	14
	<i>Auto-Hiding Windows</i>	14
	<i>Opening and Closing Windows</i>	15
	<i>The Main Windows</i>	15
	<i>Repositioning Windows</i>	16
	<i>Resetting the Window Layout</i>	16

2	WORKING WITH REPORTS	Page
2.1	Creating Reports	17
2.2	Report Views	18
	<i>Design View and Report Preview</i>	18
	<i>Code View</i>	18
2.3	Managing Reports	19
	<i>Opening and Closing Reports</i>	19
	<i>Saving Reports</i>	19
	<i>Renaming Reports</i>	20
	<i>Deleting and Removing Reports</i>	20
	<i>Importing Reports</i>	20
2.4	Report Templates	21
	<i>Creating a Report Template</i>	21
	<i>Using a Report Template</i>	21

3	BASIC REPORT ITEMS	Page
3.1	Report Items	22
	<i>Adding Items to a Report</i>	22
3.2	Selecting Report Items	23
	<i>Selecting Single Report Items</i>	23
	<i>Selecting Multiple Items</i>	23
3.3	Manipulating Report Items	24
	<i>Moving Report Items</i>	24
	<i>Resizing Items</i>	24
	<i>Using the Properties Window</i>	25
	<i>Deleting Items</i>	25
	<i>Aligning Items</i>	26
	<i>Distributing Items</i>	26
3.4	Images, Rectangles and Textboxes	27
	<i>Images</i>	27
	<i>Rectangles</i>	28
	<i>Textboxes</i>	28

4	FORMATTING	Page
4.1	Three Ways to Format an Item	29
	<i>Toolbars</i>	29
	<i>The Properties Window</i>	29
	<i>The Properties Dialog Box</i>	29
4.2	Changing Colours	30
	<i>Choosing Basic Colours</i>	30
	<i>Custom Colours</i>	31
	<i>Colour Gradients and Patterns</i>	31
4.3	Formatting Text	32
	<i>Formatting All or Part of a Textbox</i>	32
	<i>Basic Font Formatting Options</i>	32
	<i>Text Alignment</i>	32
4.4	Formatting Borders	33
	<i>The Borders Toolbar</i>	33
	<i>The Borders Dialog</i>	33
4.5	Formatting Numbers and Dates	34
	<i>Using Built-In Formats</i>	34
	<i>Creating Custom Formats</i>	34

TABLE OF CONTENTS (2 of 8)

5	GETTING DATA	Page
5.1	Data Sources and Datasets	35
	<i>The Wise Owl Movies Database</i>	35
5.2	Data Sources	36
	<i>Shared and Embedded Data Sources</i>	36
	<i>Creating a Shared Data Source</i>	36
	<i>Using a Shared Data Source</i>	38
	<i>Creating an Embedded Data Source</i>	38
5.3	Datasets	39
	<i>Shared and Embedded Datasets</i>	39
	<i>Creating a Shared Dataset</i>	39
	<i>Using a Shared Dataset</i>	40
	<i>Creating an Embedded Dataset</i>	40
5.4	The Query Designer	41
	<i>Building a Query</i>	41
5.5	Editing Data Sources and Datasets	42
	<i>Editing Data Sources</i>	42
	<i>Editing a Dataset</i>	42

6	BASIC TABLES	Page
6.1	Creating Tables	43
	<i>Inserting a Table</i>	43
	<i>Tables and Datasets</i>	43
	<i>Using the Field Selector</i>	44
	<i>Dragging Fields into a Table</i>	44
6.2	Views of a Table	45
	<i>Tables in Design View</i>	45
	<i>Tables in Report View</i>	45
6.3	Selecting in Tables	46
	<i>Selecting the Table</i>	46
	<i>Selecting Cells</i>	46
6.4	Table Properties	47
	<i>The Tablix Properties Dialog Box</i>	47
	<i>The Text Box Properties Dialog Box</i>	47
6.5	Rows and Columns	48
	<i>Selecting Rows and Columns</i>	48
	<i>Changing Column Widths</i>	48
	<i>Changing Row Heights</i>	49
	<i>Preventing Row Height Changes</i>	49
	<i>Inserting and Deleting Columns</i>	50
	<i>Inserting and Deleting Rows</i>	50
6.6	Merging and Splitting Cells	51
	<i>Merging Cells</i>	51
	<i>Splitting Cells</i>	51
6.7	Controlling Column Headers	52
	<i>How Not to Make Column Headers Repeat</i>	52
	<i>Repeating Column Headers on Each Page</i>	53
	<i>Making Column Headers Scroll</i>	54

7	SORTING AND FILTERING	Page
7.1	Sorting	55
	<i>Sorting in the Query of a Dataset</i>	55
	<i>Sorting in a Table</i>	56
	<i>Sorting in a Group</i>	56
	<i>Interactive Sorting</i>	57
7.2	Filtering	58
	<i>Filtering in the Query of a Dataset</i>	58
	<i>Filtering in the Dataset Properties Dialog Box</i>	59
	<i>Filtering a Table</i>	59
	<i>Filtering in a Group</i>	60

TABLE OF CONTENTS (3 of 8)

8	GROUPING IN TABLES	Page
8.1	Grouping Basics	61
8.2	Grouping Rows in a Table	62
	<i>Step 1 – Build a Basic Table</i>	62
	<i>Step 2 – Apply Grouping to the Detail Row</i>	62
	<i>Step 3 – Choose Which Field to Group By</i>	63
	<i>The End Result</i>	63
8.3	Removing Groups	64
	<i>Deleting Groups in the Grouping Pane</i>	64
	<i>Deleting Groups in a Table</i>	64
8.4	Formatting a Grouped Table	65
	<i>Adding Group Headers and Footers</i>	65
	<i>Rearranging Group Titles</i>	66
	<i>Adding Group Totals</i>	67
8.5	Multiple Groups	68
	<i>Adding a New Parent Group</i>	68
	<i>Adding a Child Group</i>	68
8.6	Page Breaks	69
	<i>Inserting Page Breaks between Groups</i>	69
8.7	Collapsible Groups	70
	<i>Step 1 - Hiding Detail Rows</i>	70
	<i>Step 2 - Setting Toggle Items</i>	71

9	EXPRESSIONS	Page
9.1	Overview of Expressions	72
	<i>Choosing to Create an Expression</i>	72
	<i>The Expression Builder Dialog Box</i>	73
	<i>Referring to Dataset Fields</i>	73
	<i>Referring to Report Items</i>	74
	<i>Inserting Functions</i>	74
9.2	Ad-Hoc Table Columns	75
	<i>Creating an Ad-Hoc Column Expression</i>	75
9.3	Calculated Fields	76
	<i>Adding a Calculated Field to a Dataset</i>	76
	<i>Using a Calculated Field</i>	77
	<i>Adding Calculated Fields to a Query</i>	77
9.4	Working with Numbers	78
	<i>Basic Arithmetic</i>	78
	<i>Numeric Functions</i>	78
9.5	Conditional Functions	79
	<i>The If Function</i>	79
	<i>The Switch Function</i>	79
	<i>Comparison Operators</i>	80
	<i>Logical Operators</i>	80
9.6	Working with Text	81
	<i>Concatenating Text</i>	81
	<i>Text Functions</i>	81
9.7	Working with Dates	82
	<i>Returning the Current Date</i>	82
	<i>Date Functions</i>	82
	<i>Intervals for Date Functions</i>	83
	<i>Formatting Dates</i>	83
9.8	Aggregating Data	84
	<i>Aggregate Functions</i>	84
	<i>Adding Aggregates the Quick Way</i>	84
	<i>Changing the Aggregate Function</i>	85
	<i>Specifying the Scope</i>	85
9.9	Lookup Functions	86
	<i>The Lookup Function</i>	86
	<i>The LookupSet Function</i>	86
9.10	Built-In Fields	87
	<i>Built-In Fields in the Expression Builder</i>	87
	<i>Built-In Fields in the Report Data Window</i>	87
9.11	Placeholders	88
	<i>Creating a Placeholder</i>	88

TABLE OF CONTENTS (4 of 8)

10	DYNAMIC FORMATTING	Page
10.1	Formatting with Expressions	89
	<i>Which Properties can be Calculated?</i>	89
10.2	Calculating Colours	90
	<i>Using Named Colours</i>	90
	<i>Using Custom Colours</i>	91
	<i>Converting RGB to Hexadecimal Values</i>	91
10.3	Calculating Font Properties	92
	<i>Dynamic Font Sizes</i>	92
	<i>Decorating Text</i>	92
	<i>Other Font Properties</i>	92
10.4	Dynamically Hiding Report Items	93
	<i>The Hidden Property</i>	93
	<i>Calculating the Visibility of Report Items</i>	93

11	PRINTING AND EXPORTING	Page
11.1	Printing Reports	94
	<i>Print Layout View</i>	94
	<i>Choosing to Print a Report</i>	94
11.2	Page Setup	95
	<i>Page Setup Options in Preview</i>	95
	<i>Page Setup Options in Design View</i>	95
	<i>Controlling the Page Size</i>	96
11.3	Headers and Footers	97
	<i>Adding and Removing Headers and Footers</i>	97
	<i>Adding Items to Headers and Footers</i>	97
	<i>Expressions for Headers and Footers</i>	98
	<i>Controlling Page Numbers in Groups</i>	98
11.4	Exporting Reports	99
	<i>Choosing to Export a Report</i>	99
	<i>Creating Worksheet Names in Excel</i>	99
11.5	Testing the Render Format	100
	<i>Displaying a Title Page in Excel Only</i>	100
	<i>A List of Render Formats</i>	100

12	PARAMETERS	Page
12.1	Introduction to Parameters	101
	<i>Displaying the Parameters Pane</i>	101
12.2	Report Parameters	102
	<i>Creating a Report Parameter</i>	102
	<i>Using a Report Parameter in a Filter</i>	103
	<i>Parameter Data Types</i>	103
	<i>Dealing with No Rows</i>	104
	<i>Displaying Parameter Values in the Report</i>	104
12.3	Query Parameters	105
	<i>Writing a Query using Parameters</i>	105
12.4	Organising Parameters	106
	<i>Changing the Order of Parameters</i>	106
	<i>Using the Parameters Pane</i>	106
12.5	Default Values	107
	<i>Typing in a Default Value</i>	107
	<i>Calculating Default Values</i>	107
	<i>Getting Default Values from a Dataset</i>	108
12.6	Null Values	109
	<i>Allowing Null Values</i>	109
	<i>Dealing with Nulls in Filters</i>	109
12.7	Drop Down Lists	110
	<i>Manually Entering Available Values</i>	110
	<i>Using a Dataset to Populate a List</i>	111
12.8	Multi-Value Drop Down Lists	112
	<i>Allowing Multiple Values</i>	112
	<i>Using Multiple Values in Filters</i>	112
	<i>Using Multiple Values in Queries</i>	113
	<i>Displaying Multiple Values in a Report</i>	113
12.9	Cascading Drop Down Lists	114
	<i>Creating Cascading Drop Down Lists</i>	114
	<i>Using Cascading Drop Down Lists</i>	116
12.10	Conditional Formatting with Parameters	117
	<i>Parameters in Formatting Expressions</i>	117

TABLE OF CONTENTS (5 of 8)

13	INDICATORS	Page
13.1	Creating Indicators	118
	<i>Adding an Indicator to a Table</i>	118
	<i>Assigning a Field to an Indicator</i>	118
13.2	Editing Indicators	119
	<i>Changing the Indicator</i>	119
	<i>Changing the Indicator's Field</i>	119
	<i>Changing the Aggregate Function</i>	119
13.3	Formatting Indicators	120
	<i>Changing Indicator Colours and Icons</i>	120
	<i>Formatting the Background of an Indicator</i>	120
13.4	Indicator Size and Position	121
	<i>Controlling the Size of an Indicator</i>	121
	<i>Preventing an Indicator from Stretching</i>	121
13.5	Scaling and Measurement Units	122
	<i>Changing the Scope of Scaling</i>	122
	<i>Changing the Measurement Units</i>	123
	<i>Adding and Removing Bands</i>	123

14	GAUGES	Page
14.1	What are Gauges?	124
	<i>Anatomy of a Gauge</i>	124
14.2	Creating Gauges	125
	<i>Inserting a Gauge into a Table</i>	125
	<i>Assigning a Field to a Gauge</i>	125
14.3	Editing Gauges	126
	<i>Selecting Part of a Gauge</i>	126
	<i>Adding and Deleting Items in a Gauge</i>	126
14.4	Editing a Scale	127
	<i>Changing the Limits of the Scale</i>	127
	<i>Formatting Tick Marks</i>	127
	<i>Changing the Scale's Dimensions</i>	128
14.5	Editing a Pointer	129
	<i>Changing the Pointer Type</i>	129
	<i>Setting the Pointer Size and Position</i>	130
	<i>Changing the Pointer Fill Colour</i>	130
14.6	Editing a Range	131
	<i>Setting the Start and End Position</i>	131
	<i>Changing the Size and Position</i>	131
	<i>Changing the Fill Colour</i>	131
14.7	Editing the Gauge	132
	<i>Choosing a Frame</i>	132
	<i>Formatting the Frame</i>	132
	<i>Setting the Size and Position</i>	132
14.8	Editing a Label	133
	<i>Setting the Value Displayed</i>	133
	<i>Anchoring a Label</i>	133
14.9	Multiple Items	134
	<i>Multiple Pointers</i>	134
	<i>Multiple Scales</i>	134
	<i>Multiple Gauges</i>	135
	<i>Creating Child Gauges</i>	135

TABLE OF CONTENTS (6 of 8)

15	CHARTS	Page
15.1	Creating Charts	136
	<i>Inserting a Chart into a Report</i>	136
	<i>Inserting a Chart into a Tablix Item</i>	136
	<i>Assigning Fields to a Chart</i>	137
	<i>Previewing a Chart</i>	137
15.2	Editing Charts	138
	<i>Parts of a Chart</i>	138
	<i>Changing Chart Properties</i>	139
	<i>Adding and Removing Elements in a Chart</i>	139
15.3	Chart Colours	140
	<i>Choosing a Colour Palette</i>	140
	<i>Creating a Custom Palette</i>	140
	<i>Calculating Colours</i>	141
	<i>Synchronising Colours in a Table</i>	141
15.4	Using Multiple Value Fields	141
	<i>Adding Multiple Value Fields to a Chart</i>	142
	<i>Multiple Value Axes</i>	143
	<i>Using Different Chart Types</i>	143
15.5	Sparklines	144
	<i>Adding a Sparkline to a Report or Tablix Item</i>	144
	<i>Editing Sparklines</i>	144
15.6	Databars	145
	<i>Adding a Data Bar to a Report or Tablix Item</i>	145
	<i>Editing Data Bars</i>	145

16	MATRICES	Page
16.1	Overview of Matrices	146
	<i>Adding a Matrix to a Report</i>	146
	<i>Assigning Fields to a Matrix</i>	146
16.2	Editing a Matrix	147
	<i>Changing the Aggregate Function</i>	147
	<i>Replacing Empty Cells</i>	147
	<i>Displaying Row and Column Totals</i>	148
16.3	Sorting a Matrix	149
	<i>Sorting by Row and Column Fields</i>	149
	<i>Sorting by Values</i>	149
16.4	Matrix Headers and Titles	150
	<i>Inserting the Extra Row</i>	150
	<i>Controlling the Height of the Header Row</i>	150
16.5	Repeating and Scrolling Headers	151
	<i>Making Row and Column Headers Repeat</i>	151
16.6	Multiple Grouping Levels	152
	<i>Creating Multiple Grouping Levels</i>	152

17	LISTS	Page
17.1	Introduction to Lists	153
	<i>What a List Really Is</i>	153
17.2	Creating a List	154
	<i>Inserting a List into a Report</i>	154
	<i>Adding Fields to a List</i>	154
	<i>Adding Labels to Fields</i>	155
17.3	Grouped Lists	156
	<i>Adding a Group to a List</i>	156

TABLE OF CONTENTS (7 of 8)

18	SUBREPORTS	Page
18.1	An Overview of Subreports	157
18.2	Creating the Child Report	158
	<i>Step 1 - Create the Dataset</i>	158
	<i>Step 2 - Create a Parameter</i>	158
	<i>Step 3 - Filter the Dataset</i>	159
	<i>Step 4 - Design the Report</i>	159
18.3	Creating the Parent Report	160
	<i>Step 1 - Create the Dataset</i>	160
	<i>Step 2 - Design the Report</i>	160
18.4	Combining the Parent and Child Reports	161
	<i>Step 1 - Insert a Subreport into the Parent Report</i>	161
	<i>Step 2 - Assign a Report to the Subreport</i>	161
	<i>Step 3 - Pass a Value to the Child Report's Parameter</i>	162
	<i>Running the Report</i>	162

19	DRILLTHROUGH REPORTS	Page
19.1	Overview of Drillthrough Reports	163
	<i>The Example for this Chapter</i>	163
19.2	Creating the Child Report	164
	<i>Step 1 - Create the Dataset</i>	164
	<i>Step 2 - Hide the Parameter</i>	164
	<i>Step 3 - Design the Report</i>	164
19.3	Creating the Parent Report	165
	<i>Step 1 - Create the Dataset</i>	165
	<i>Step 2 - Design the Report</i>	165
19.4	Creating Report Actions	166
	<i>Step 1 - View the Action Properties</i>	166
	<i>Step 2 - Configure the Action to Open a Report</i>	166
19.5	Using Drillthrough Reports	167
	<i>Running the Parent Report</i>	167
	<i>Returning to the Parent Report</i>	167
19.6	Multiple Parameters	168
	<i>Creating Child Reports with Multiple Parameters</i>	168
	<i>Creating the Parent Report</i>	168

20	MAPS	Page
20.1	Maps in SSRS	169
	<i>Map Data</i>	169
20.2	Creating a Map Report	170
	<i>Creating a Dataset</i>	170
	<i>Inserting a Map into a Report</i>	170
20.3	The Map Wizard	171
	<i>Step 1 - Choosing a Map Source</i>	171
	<i>Step 2 - Cropping and Resizing the Map</i>	171
	<i>Step 3 - Choosing a Type of Visualisation</i>	172
	<i>Step 4 - Selecting a Dataset</i>	172
	<i>Step 5 - Linking the Dataset to the Map</i>	173
	<i>Step 6 - Choosing Which Field to Display</i>	173
20.4	Editing Maps	174
	<i>Map Options and Properties</i>	174
	<i>Map Layers</i>	174
20.5	Colour Rules	175
	<i>Controlling Colour Bands</i>	175
	<i>Types of Colour Rules</i>	176

21	DEPLOYING REPORT PROJECTS	Page
21.1	What is Deployment?	177
21.2	Preparing for Deployment	178
	<i>Finding the URL of the Report Server</i>	178
	<i>Setting the Target Server for a Report Project</i>	179
	<i>Choosing Whether to Overwrite Data Sources</i>	179
21.3	Deploying the Project	180
	<i>Deploying a Report Project</i>	180

TABLE OF CONTENTS (8 of 8)

22	THE REPORTING SERVICES WEB PORTAL	Page
22.1	Overview of the Web Portal	181
22.2	Getting to the Web Portal	182
	<i>Finding the Web Portal URL</i>	182
	<i>Browsing to the Web Portal</i>	182
22.3	Using the Web Portal	183
	<i>The Web Portal Menu</i>	183
	<i>Viewing Item Options</i>	184
	<i>Finding Items</i>	184
	<i>Using Favourites</i>	184
22.4	Working with Reports	185
	<i>Viewing and Exporting Reports</i>	185
	<i>Downloading Reports</i>	186
	<i>Moving and Deleting Reports</i>	186
	<i>Managing Reports</i>	187
22.5	Report Builder	188
	<i>Editing Reports in Report Builder</i>	188
	<i>Viewing Windows in Report Builder</i>	189
	<i>Inserting New Items in Report Builder</i>	189
	<i>Saving the Report</i>	189
22.6	Uploading Items	190
	<i>Uploading Files in the Web Portal</i>	190
22.7	Security in Reporting Services	191
	<i>Users, Groups and Roles</i>	191
	<i>Assigning Users to System-Level Roles</i>	191
	<i>Assigning Users to Item-Level Roles</i>	192
	<i>Creating New Roles</i>	193

23	MANAGING DATA SOURCES AND DATASETS	Page
23.1	Deployed Data Sources and Datasets	194
	<i>Viewing Shared Data Sources and Datasets</i>	194
23.2	Managing Data Sources	195
	<i>Editing Data Sources</i>	195
	<i>Creating a New Data Source</i>	196
23.3	Data Source Credentials	197
	<i>Viewing Credential Options</i>	197
	<i>Storing Credentials in a Data Source</i>	198
	<i>Prompting for Credentials</i>	198
23.4	Managing Datasets	199
	<i>Creating a New Dataset</i>	199
	<i>Viewing a Dataset's Data</i>	200
	<i>Editing a Dataset</i>	200

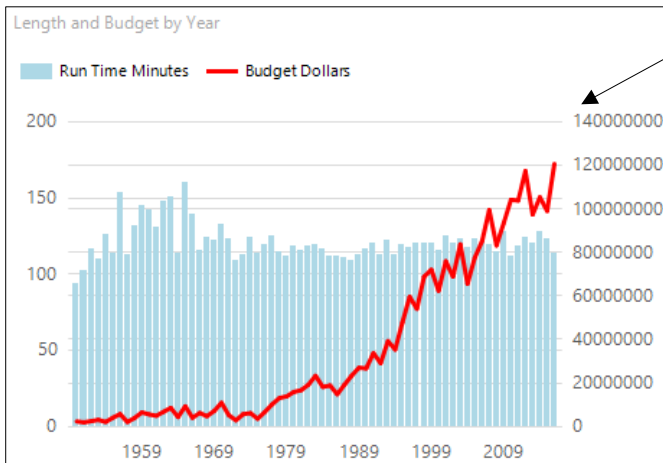
24	SCHEDULES, SNAPSHOTS AND SUBSCRIPTIONS	Page
24.1	Alternative Ways to Run Reports	201
24.2	Schedules	202
	<i>Running the SQL Server Agent</i>	202
	<i>Managing Shared Schedules</i>	202
	<i>Configuring a Schedule</i>	203
24.3	Caching Reports and Datasets	204
	<i>Enabling Caching</i>	204
	<i>Cache Expiration Settings</i>	205
	<i>Cache Refresh Plans</i>	205
	<i>Setting Parameter Values</i>	206
	<i>Running a Report from a Cache Snapshot</i>	206
24.4	Report History Snapshots	207
	<i>Creating a History Snapshot Manually</i>	207
	<i>Creating Scheduled History Snapshots</i>	207
	<i>Retaining History Snapshots</i>	208
24.5	Subscriptions	209
	<i>Types of Subscription</i>	209
	<i>Creating a Subscription</i>	209
	<i>Using a Windows File Share Destination</i>	210
	<i>Using an Email Destination</i>	210
	<i>Assigning Parameter Values</i>	211
	<i>Managing Subscriptions</i>	211

25	KPIs AND MOBILE REPORTS	Page
25.1	Other Types of Report	212
25.2	KPIs	213
	<i>An Example KPI</i>	213
	<i>Creating a KPI Dataset</i>	213
	<i>Creating a KPI</i>	214
	<i>Setting the Value Field</i>	214
	<i>Setting the Goal Field</i>	215
	<i>Setting the Status Field</i>	215
	<i>Setting the Trend Set Field</i>	216
	<i>Related Content</i>	216
25.3	Mobile Reports	217
	<i>Choosing to Create a Mobile Report</i>	217
	<i>Adding and Editing Visualisations</i>	218
	<i>Formatting Visualisations</i>	219
	<i>Viewing a Visualisation's Data</i>	219
	<i>Adding Data to a Mobile Report</i>	220
	<i>Changing Report Settings</i>	221
	<i>Saving a Mobile Report</i>	221

CHAPTER 1 - GETTING STARTED

1.1 What is Reporting Services?

SQL Server Reporting Services (SSRS) allows you to create, manage and share reports. You can see examples of the types of reports you can create in the diagram below:

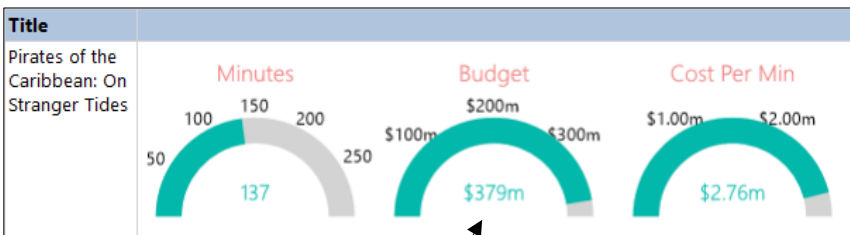


Charts allow you to display data graphically.

Year	Quarter	Month	Action	Adventure	Ani
2016	1	January			
		February	108		
		March	151		
	2	April			105
		May	291		

A matrix groups data into rows and columns.

Akira Kurosawa		
Title	Run Time	
Seven Samurai	207	↑
Kagemusha	180	↑
Ran	162	→
Ikiru	143	→
The Hidden Fortress	139	→
Throne of Blood	110	↓
Yojimbo	110	↓
Sanjuro	95	↓
Rashomon	88	↓



Indicators and gauges allow you to replace a boring list of numbers with a set of interesting icons and simple charts.

You can add *parameters* to a report to allow users to control what data they see.

Even a boring table can become exciting by adding interactive elements to it.

Australia		
Brazil		
Title	Release Date	Run Time
City of God	30/08/2002	130
Total		130
Canada		

Choose director: Steven Spielberg

Choose film: Raiders of the Lost Ark

Cast list for Raiders of the Lost Ark

Role	Actor
Indiana Jones	Harrison Ford
Sallah	John Rhys-Davies
Satipo	Alfred Molina
Marion Ravenwood	Karen Allen
Special vocal effects	Frank Welker
Dr. Marcus Brody	Denholm Elliott

1.2 Visual Studio and SQL Server Data Tools

SQL Server Data Tools (SSDT) is a set of templates for *Visual Studio*, Microsoft's flagship development tool. You create reports in Visual Studio using the SSDT templates.

A Brief History of Version Numbers

The versions of Visual Studio and SQL Server that go together by default aren't quite as intuitive as you'd expect!

SQL Server version	Default Visual Studio version	Name of Business Intelligence Templates
2008 R2	2008	Business Intelligence Development Studio (BIDS)
2012	2010	SQL Server Data Tools (SSDT)
2014	2012 (and later, 2013)	
2016	2015	
2017	2015	

The screenshots in this manual are taken from SQL Server 2016 Developer Edition and Visual Studio 2015 Community Edition.



You can use a later version of Visual Studio to connect to data stored in an earlier version of SQL Server. You can also deploy report projects to earlier versions of SQL Server, providing that you change the appropriate settings.

Installing SQL Server Data Tools

You can install SSDT either as a standalone product or within an existing installation of Visual Studio. The standalone version of SSDT installs a lightweight Shell edition of Visual Studio.

<https://docs.microsoft.com/en-us/sql/ssdt/download-sql-server-data-tools-ssdt>

Installing SSDT without Visual Studio pre-installed

If you don't have Visual Studio installed on your machine, installing SSDT for Visual Studio 2015 will also install a minimal "Integrated Shell" version of Visual Studio 2015. This version of Visual Studio is free to install and use on as many machines as you wish. It gives you all the SQL Server project types, plus SQL Server Object Explorer and other SQL tools experiences.

If you do have [Visual Studio 2015 Community Edition \(or above\)](#) installed on your machine, installing SSDT will add the full set of SQL Server tools into your existing Visual Studio installation. Visual Studio includes many features you might want to use, such as Source Code Control integration and non-SQL language support. We recommend using Visual Studio 2015 Community or above to get the best experience when developing T-SQL.

You can read more about how SSDT works at this Microsoft web page.

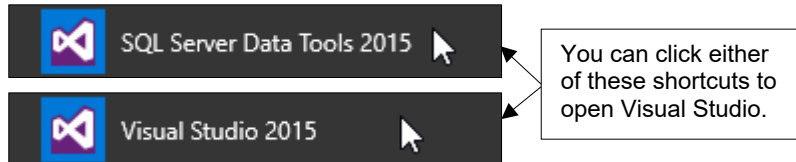
The page also includes links to download the various pieces of software that you'll need.

1.3 Report Server Projects

Before creating a report you'll need to create a *report server project*. The project contains all of the reports and any associated items such as database connections and queries.

Opening Visual Studio

Depending on which version of SSDT you installed you may find multiple **Start Menu** shortcuts to open Visual Studio.



Creating a New Project

To create a new report server project:

- 1) Choose an option from the table on the right:

Menu	Keyboard
F ile N ew P roject...	Ctrl + Shift + N

- 2) Complete the dialog box as shown in the diagram below:

The screenshot shows the 'New Project' dialog box with the following configurations:

- Category:** Business Intelligence
- Template:** Report Server Project
- Name:** Report Project1
- Location:** C:\Wise Owl\Manuals\SSRS 2016\
- Solution name:** Report Project1
- Options:** Create directory for solution, Add to Source Control

Callout boxes provide the following instructions:

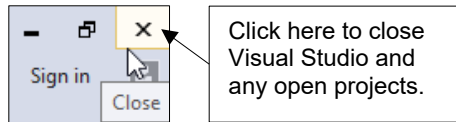
- a) Choose the **Business Intelligence** category.
- b) Choose the **Report Server Project** template.
- c) Give your project a sensible name and set where to save it.
- d) Optionally, you can create a **Solution** folder and give it a name. This is only worth doing if you're planning to create multiple projects in a single directory.
- e) Click **OK** to create the project.

Closing a Project

The simplest way to close a project is to quit from Visual Studio. To do this:

Menu	Keyboard
File Exit	Alt + F4

You could also just click the cross at the top right of the Visual Studio window to close the application.



If you prefer, you can close the current solution and keep Visual Studio open. To do this:

Menu
File Close Solution

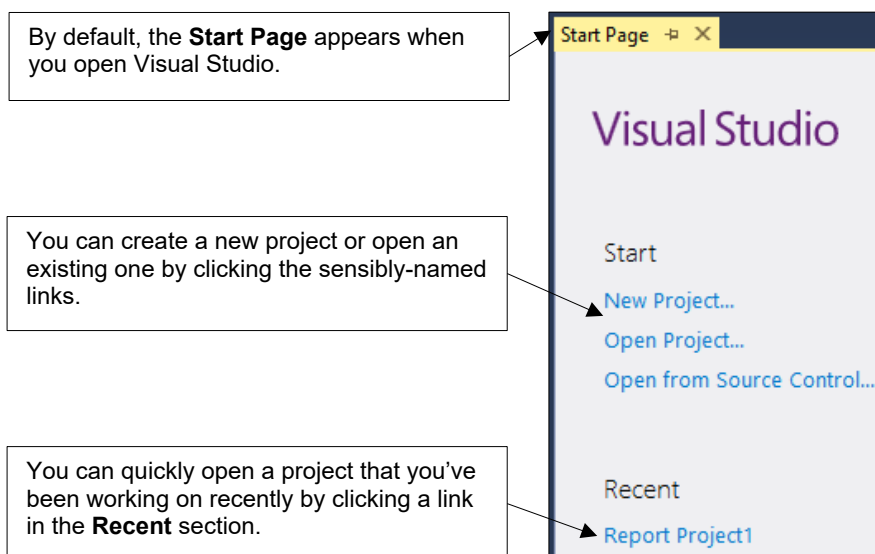
Opening an Existing Project

You can open an existing project in several ways, as shown in the table below:

Menu	Alternative menu	Keyboard
File Open Project/Solution	File Recent Projects and Solutions [Project name]	Ctrl + Shift + O

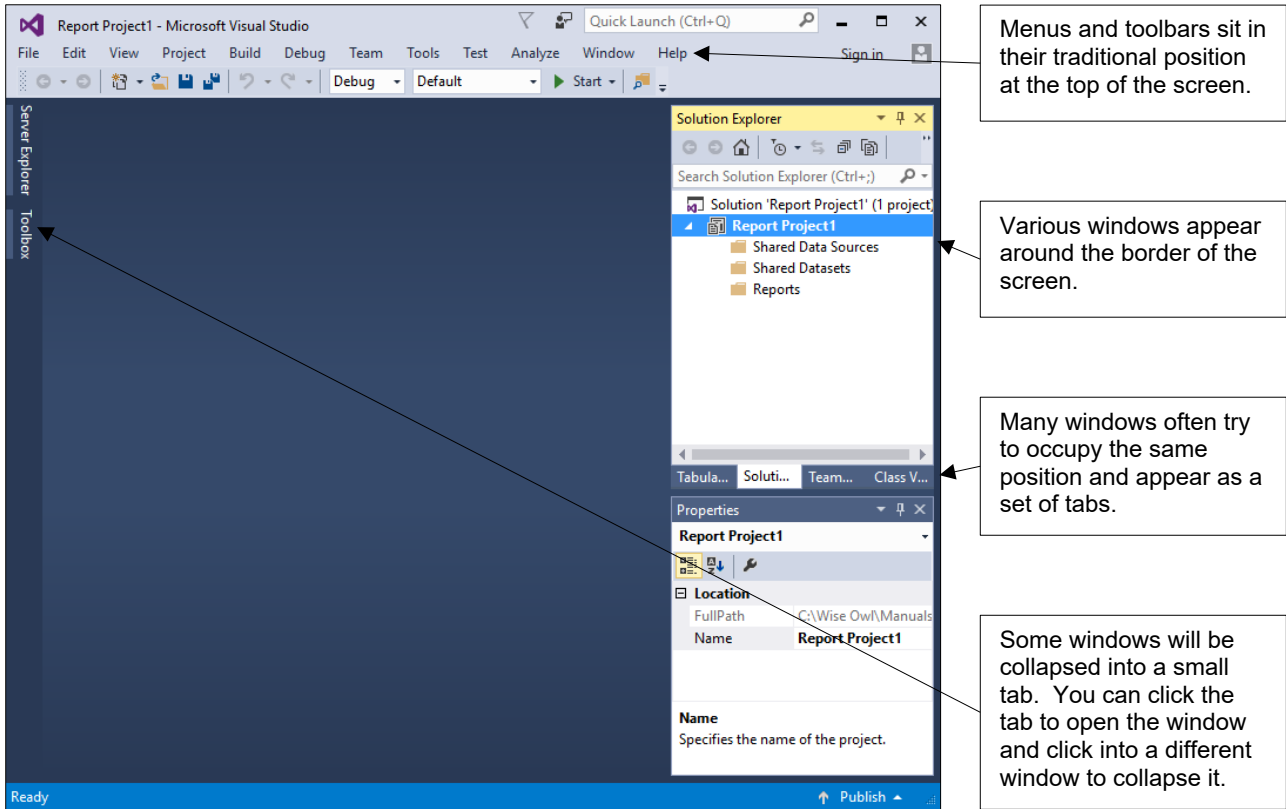
Using the Start Page

You can create and open projects quickly by using the links that appear on the *Start Page* when you first open Visual Studio.



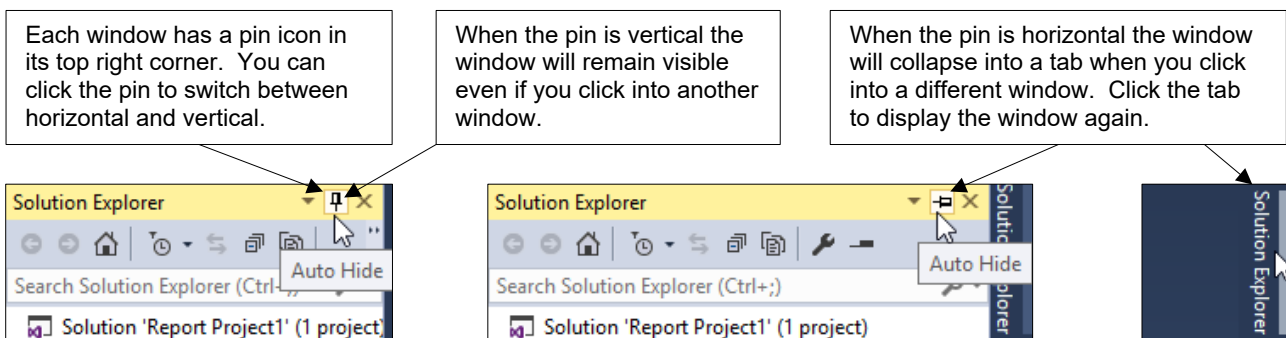
1.4 The Visual Studio Screen

Visual Studio is a complex application! You can see an overview of the main areas of the screen in the diagram below:



Auto-Hiding Windows

You'll use lots of different windows in Visual Studio. To make sure that you have enough space to design your reports you can set windows to *Auto Hide*.



Opening and Closing Windows

Visual Studio displays lots of windows by default, many of which you won't need when working on a report server project. You can close the windows that you don't need.



It's highly unlikely that you'll need to use the **Class View** window when working in a report server project. You can click the cross at the top right corner to close it.

To reopen any windows that you've closed, choose **View** from the menu and select the window that you want to display.

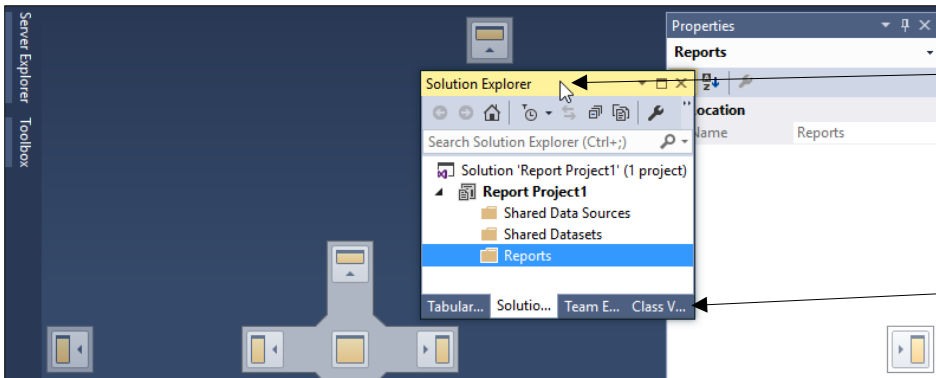
The Main Windows

There are several windows that you'll use frequently in a report server project. You can see a description of the main windows in the table below:

Name	What it's for	What it looks like
<i>Solution Explorer</i>	Lists all of the items that belong to the project that you're working on.	
<i>Properties</i>	Displays the attributes of any object that you have selected. You can change these properties to alter the object in various ways.	
<i>Report Data</i>	Allows you to create connections to data sources and queries to retrieve data that will be displayed in the report. This window appears when you open a report.	
<i>Toolbox</i>	Contains objects that you can add to the design of your report.	

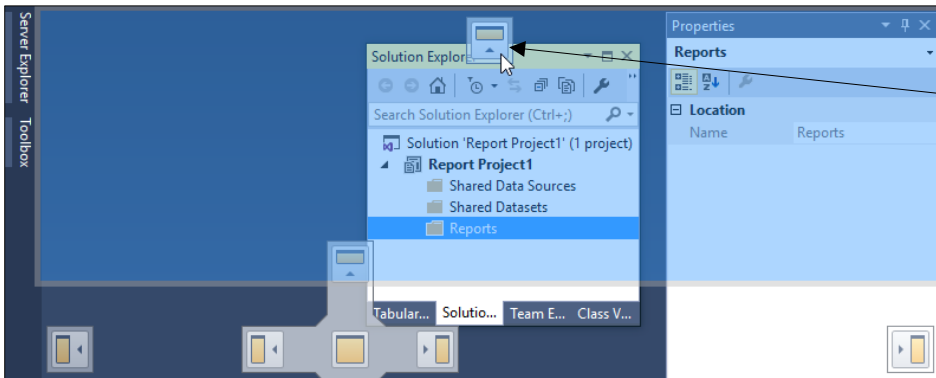
Repositioning Windows

If you'd prefer a window to appear somewhere other than its default location, you can dock it to one of many other positions by clicking and dragging on the window's title bar.



Click and drag the title bar of a window to undock it from its current location.

If you have multiple windows grouped in a set of tabs, you can click and drag on the tab to move just one window rather than the whole group.

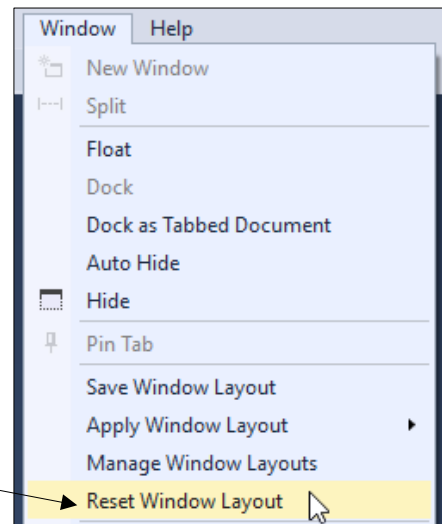


Drag the window to one of the icons that appear around the screen.

Release the mouse button to dock the window to the location indicated by the blue shaded area.

Resetting the Window Layout

If you manage to make a mess of your window layout (a surprisingly easy thing to do!) you can quickly reset everything by choosing **Window | Reset Window Layout** from the menu.

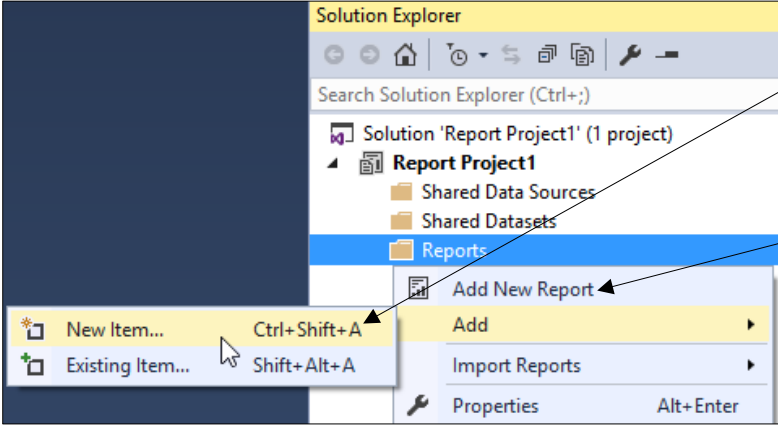


It's difficult to overstate the usefulness of this option!

CHAPTER 2 - WORKING WITH REPORTS

2.1 Creating Reports

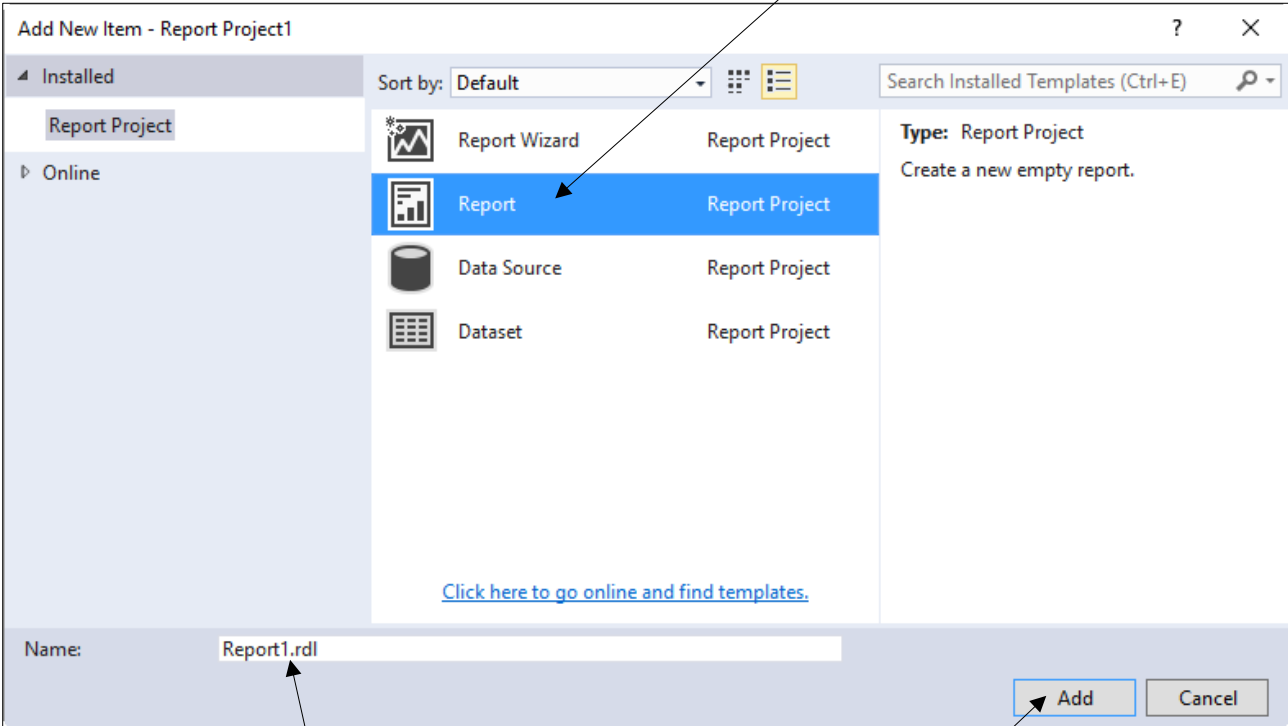
You can create new reports using the **Solution Explorer** window.



a) In the **Solution Explorer** window, right-click the **Reports** folder and choose **Add | New Item...** or use the shortcut key shown here.

b) The **Add New Report** option launches a wizard which provides a guided way to create a new report.

c) On the dialog box which appears, click the **Report** option in the list.



d) Give the report a sensible name, or an uninspired, boring one as I've done here.

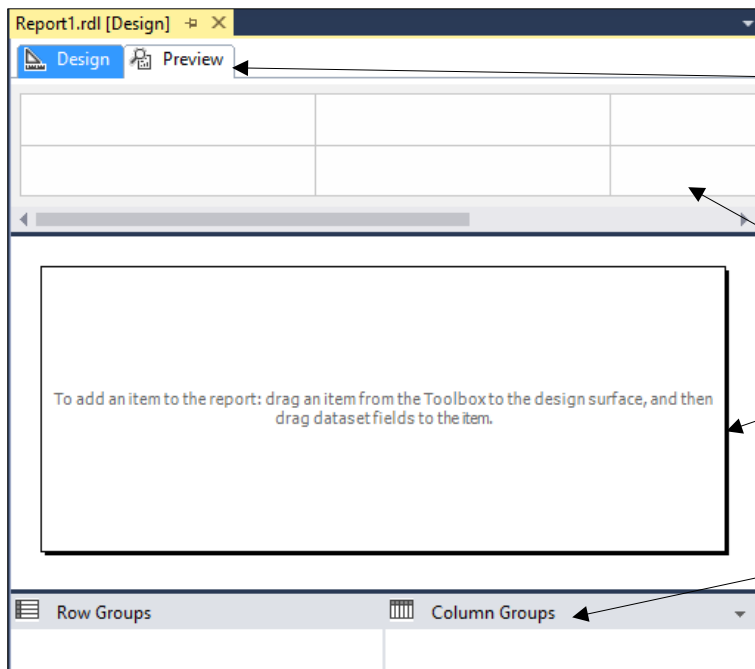
e) Click **Add** to create the report and open it ready for editing.

2.2 Report Views

You can switch between several different views of a report.

Design View and Report Preview

When you create a report it will automatically open in *design view*. This is where you'll spend most of your time as a report author. You can switch a report to a *preview* to run it and view its results.



Report1.rdl [Design] -> X

Design Preview

To add an item to the report: drag an item from the Toolbox to the design surface, and then drag dataset fields to the item.

Row Groups Column Groups

View

Add Page Header

Add Page Footer

Ruler

Grouping

Parameters

You can switch between the two main views using the tabs at the top of the report window. Switching to the preview will automatically save the report.

The top region of the window is occupied by the **Parameters Window**.

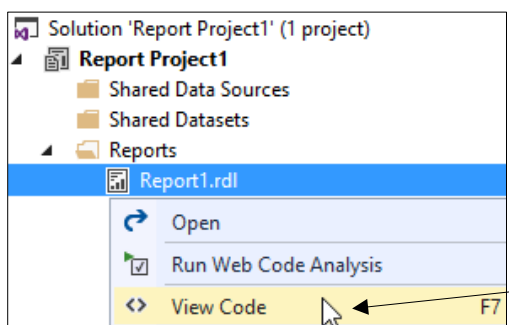
The main area of the window contains the report *design surface*. This is where you add items to display the report's data.

The bottom of the window displays the **Grouping Pane**.

You can hide the **Parameters Window** and **Grouping Pane** to provide more space to design your report. To do this, right-click in the area surrounding the report's design surface and choose **View** followed by the item you'd like to hide.

Code View

SSRS reports are written in a language called *Report Definition Language (RDL)*. You can see the RDL code that the report designer generates for you by opening the report in *code view*.



Solution 'Report Project1' (1 project)

Report Project1

- Shared Data Sources
- Shared Datasets
- Reports
 - Report1.rdl

Open

Run Web Code Analysis

View Code F7

```

1 <?xml version="1.0" encoding="utf-8"?>
2 <Report MustUnderstand="df" xmlns="http://schemas.microsoft.com/reporting/reporting2005" >
3   <df:DefaultFontFamily>Segoe UI</df:DefaultFontFamily>
4   <AutoRefresh>0</AutoRefresh>
5   <ReportSections>
6     <ReportSection>

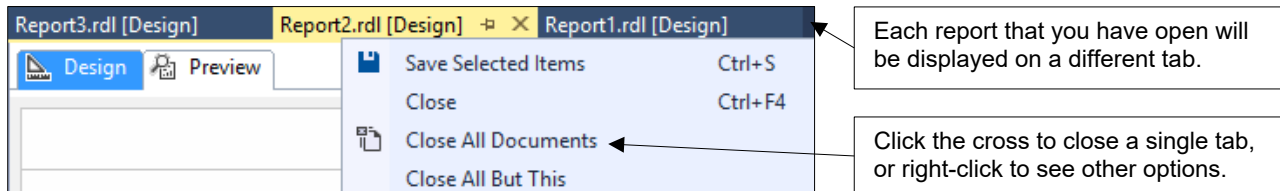
```

Right-click on a report in the Solution Explorer and choose **View Code** to see what your report really looks like!

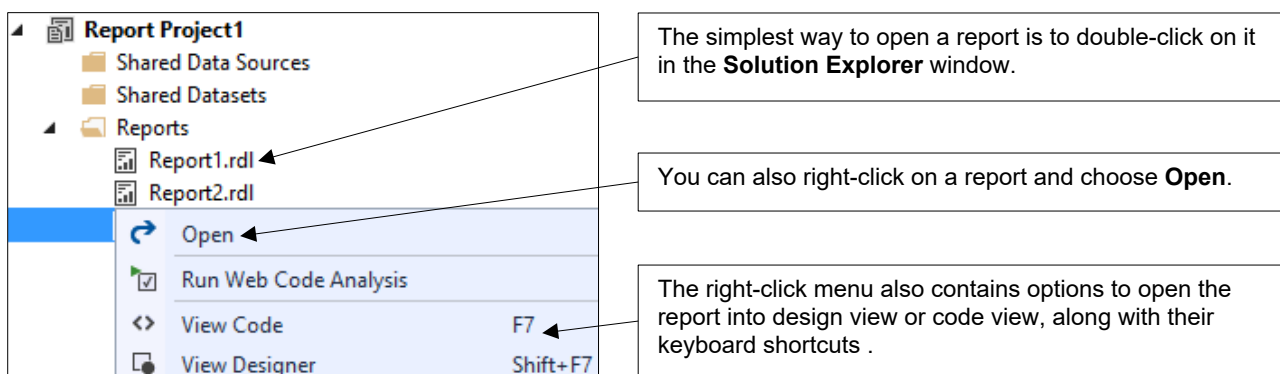
2.3 Managing Reports

Opening and Closing Reports

A report will be opened automatically when you first create it. You can close reports that you currently have open using the tabs at the top of the report window.



You can open a closed report from the **Solution Explorer** window.

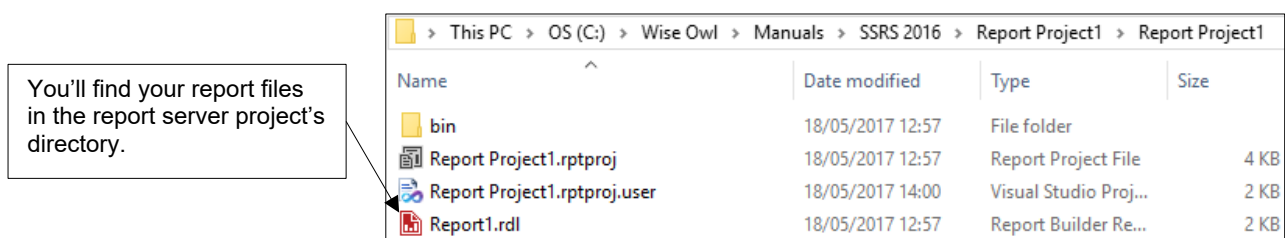


Saving Reports

You can choose to save either all of the reports you have open, or just those that you have selected. To select multiple reports you can click their tabs while holding the **Ctrl** key.

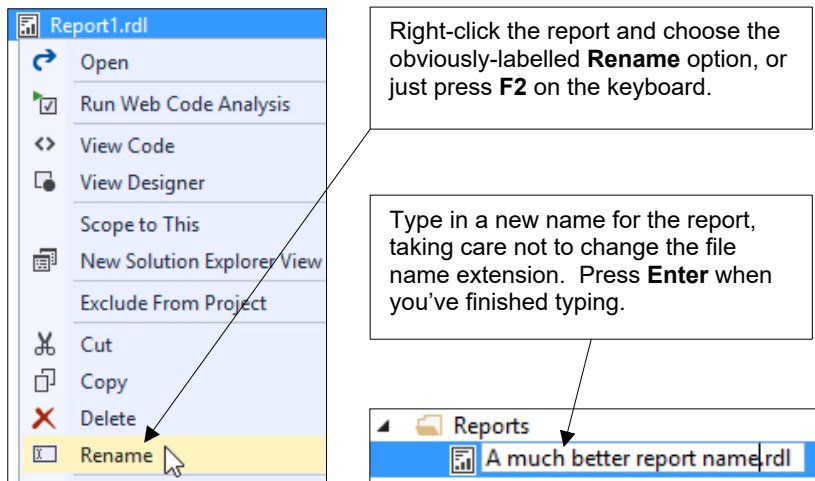
Option	Menu	Keyboard	Right Mouse
Save selected reports	File Save Selected Items	Ctrl + S	Save Selected Items
Save all open reports	File Save All	Ctrl + Shift + S	N/A

Reports are saved in the folder that you specified when you created the report project:



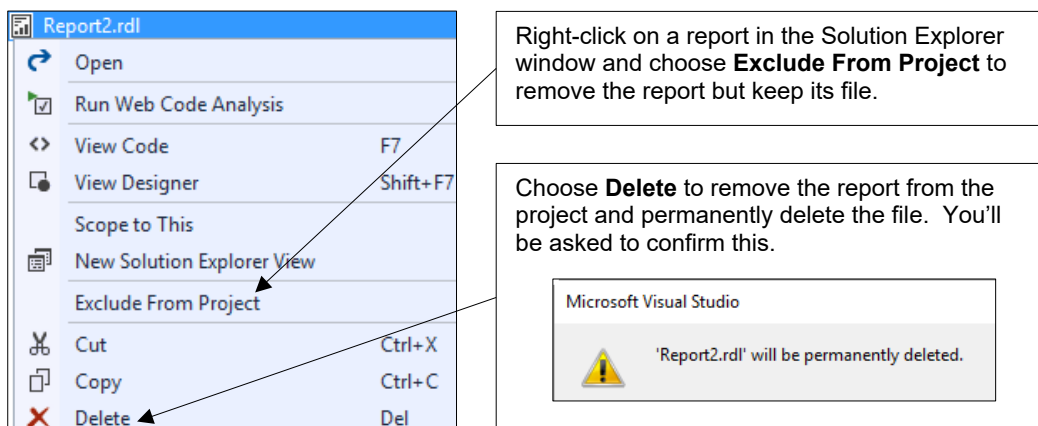
Renaming Reports

If you change your mind about the name you gave to the report when you created it, you can change it in the **Solution Explorer** window:



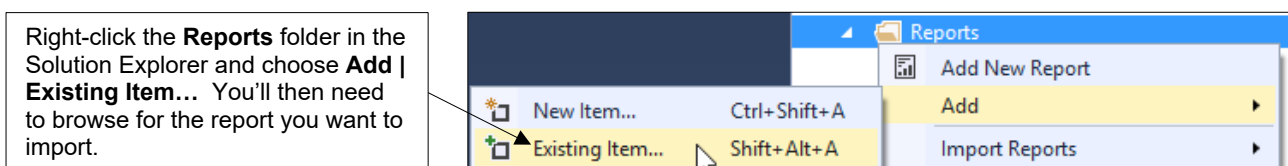
Deleting and Removing Reports

You can delete a report and its associated file entirely, or you can remove the report from the project but keep the file:



Importing Reports

If you want to bring back a report that you've removed from the project or add a report from another project, you can choose to import it:



2.4 Report Templates

The default report template contains nothing more than an empty page. Fortunately, you can create your own report templates populated with as many items as you like.

Creating a Report Template

To begin creating a report template, add a new report to your project in the usual way and add any items that you'd like to include in your template.



Your report template can be as elaborate as you like. This relatively basic one contains a custom header with a company logo and a table with some formatting applied to the header row.

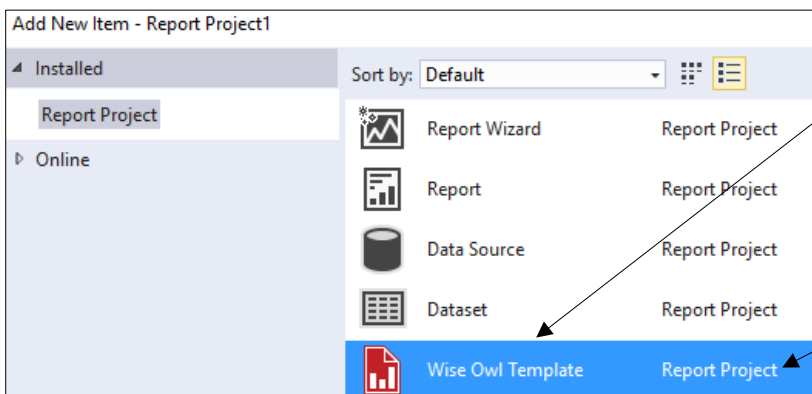
Once you've saved the report you can use it to create a template by copying the file to the correct location.

Copy the report you created to this folder. This is the default path for a standard installation of Visual Studio 2015.

Name	Date modified	Type	Size
Wise Owl Template.rdl	18/05/2017 16:34	Report Builder Re...	30 KB
DataSet.vsz	23/06/2016 02:30	Visual Studio Wiza...	1 KB

Using a Report Template





If you've copied the file to the correct location, you'll see your template the next time you choose to add a new report to your project.



Choose to add a new item to your project in the usual way. You'll see your report template listed in the dialog box.

Select the template and create the report – it will contain all the items that you added when you created the template.

WHAT WE DO

				
	ONLINE TRAINING	MANCHESTER OR LONDON	AT YOUR OFFICE	BESPOKE CONSULTANCY
OFFICE 365	Microsoft Excel	✓	✓	✓
	VBA macros	✓	✓	✓
	Office Scripts	✓		✓
	Microsoft Access			✓
POWER PLATFORM	Power BI and DAX	✓	✓	✓
	Power Apps	✓		✓
	Power Automate	✓	✓	✓
SQL SERVER	Reporting Services	✓	✓	✓
	Report Builder	✓		✓
	Integration Services	✓	✓	✓
	Analysis Services	✓		✓
CODING LANGUAGES	SQL	✓	✓	✓
	Visual C#	✓	✓	✓
	Python	✓	✓	✓



WiseOwl
Training

